

Ignition Starter Switches

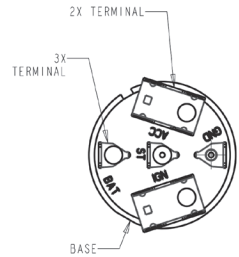
Ignition starter switches are used every time you start your vehicle and will wear out over time. Common symptoms of a failed ignition starter switch are that the vehicle starts and dies quickly or won't start at all. Pollak® offers a wide range of ignition starter switches for many Heavy Duty and universal applications.



31-406P

Voltage: 12-24
Amperage Ratings:
 Ignition: 8 amp; Accessory: 30 amp
 Start Terminal: Make: 74 amp;
 Break: 20 amp
Functions: ACC, OFF, ON/ACC, Start
Numbers of Switch Positions: 4

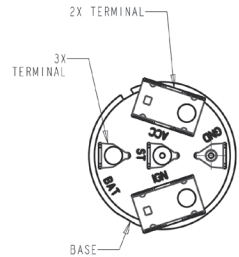
Keys Included: No
Terminal Gender: Male
Terminal Quantity: 11
Terminal Type: Blade
OEM Replacement: Freightliner
OE Reference: A0622717001



31-407P

Voltage: 12-24
Amperage Ratings:
 Ignition: 8 amp; Accessory: 30 amp
 Start Terminal: Make: 74 amp;
 Break: 20 amp
Functions: ACC, OFF, ON/ACC, Start
Numbers of Switch Positions: 4

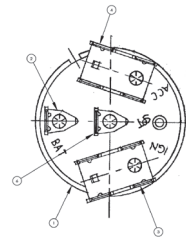
Keys Included: No
Terminal Gender: Male
Terminal Quantity: 11
Terminal Type: Blade
OEM Replacement: Freightliner
OE Reference: A0622717002



31-408P

Voltage: 12-24
Amperage Ratings:
 Ignition: 8 amp; Accessory: 30 amp
 Start Terminal: Make: 74 amp;
 Break: 20 amp
Functions: ACC, OFF, ON/ACC, Start
Numbers of Switch Positions: 4

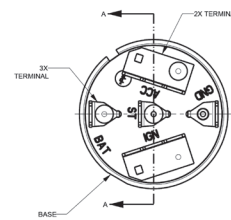
Keys Included: No
Terminal Gender: Male
Terminal Quantity: 6
Terminal Type: Blade
OEM Replacement: Freightliner
OE Reference: A0682073000



31-409P

Voltage: 12-24
Amperage Ratings:
 Ignition: 8 amp; Accessory: 30 amp
 Start Terminal: Make: 74 amp;
 Break: 20 amp
Functions: ACC, OFF, ON/ACC, Start
Numbers of Switch Positions: 4

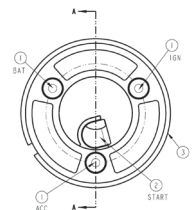
Keys Included: No
Terminal Gender: Male
Terminal Quantity: 7
Terminal Type: Blade
OEM Replacement: Peterbilt
OE Reference: 1609149



31-410P

Voltage: 12-24
Amperage Ratings:
 Ignition: 8 amp; Accessory: 30 amp
 Start Terminal: Make: 74 amp;
 Break: 20 amp
Functions: ACC, OFF, ON/ACC, Start
Numbers of Switch Positions: 4

Keys Included: No
Terminal Gender: Male
Terminal Quantity: 4
Terminal Type: Blade
OEM Replacement: NAVISTAR
OE Reference: 3545580C2

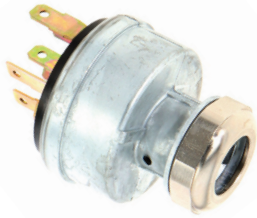
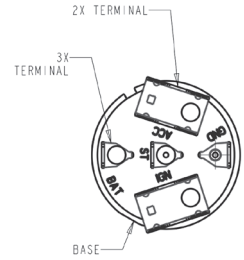




31-411P

Voltage: 12-24
Amperage Ratings:
 Ignition: 8 amp; Accessory: 30 amp
 Start Terminal: Make: 74 amp;
 Break: 20 amp
Functions: ACC, OFF, ON/ACC, Start
Numbers of Switch Positions: 4

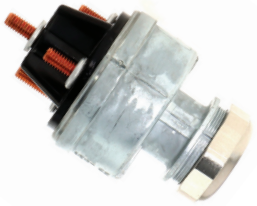
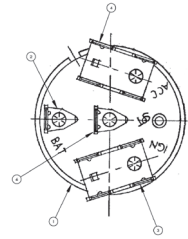
Keys Included: 2
Terminal Gender: Male
Terminal Quantity: 11
Terminal Type: Blade
OEM Replacement: NAVISTAR
OE Reference: 468438C91



31-412P

Voltage: 12-24
Amperage Ratings:
 Ignition: 8 amp; Accessory: 30 amp
 Start Terminal: Make: 74 amp;
 Break: 20 amp
Functions: ACC, OFF, ON/ACC, Start
Numbers of Switch Positions: 4

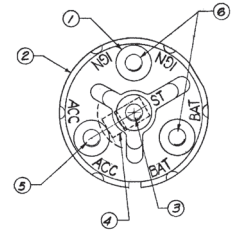
Keys Included: No
Terminal Gender: Male
Terminal Quantity: 6
Terminal Type: Blade
OEM Replacement: Freightliner
OE Reference: POL31206



31-413P

Voltage: 12-24
Amperage Ratings:
 Ignition: 8 amp; Accessory: 30 amp
 Start Terminal: Make: 74 amp;
 Break: 20 amp
Functions: ACC, OFF, ON/ACC, Start
Numbers of Switch Positions: 4

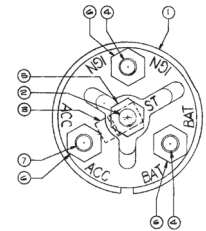
Keys Included: No
Terminal Gender: Male
Terminal Quantity: 4
Terminal Type: Stud
OEM Replacement: Freightliner
OE Reference: 822013401



31-414P

Voltage: 12-24
Amperage Ratings:
 Ignition: 8 amp; Accessory: 30 amp
 Start Terminal: Make: 74 amp;
 Break: 20 amp
Functions: ACC, OFF, ON/ACC, Start
Numbers of Switch Positions: 4

Keys Included: No
Terminal Gender: Male
Terminal Quantity: 4
Terminal Type: Stud
OEM Replacement: Peterbilt
OE Reference: 271039



31-415P

Voltage: 12-24
Amperage Ratings:
 Ignition: 8 amp; Accessory: 30 amp
 Start Terminal: Make: 74 amp;
 Break: 20 amp
Functions: ACC, OFF, ON/ACC, Start
Numbers of Switch Positions: 4

Keys Included: No
Terminal Gender: Male
Terminal Quantity: 7
Terminal Type: Blade
OEM Replacement: Peterbilt
OE Reference: P276217

